

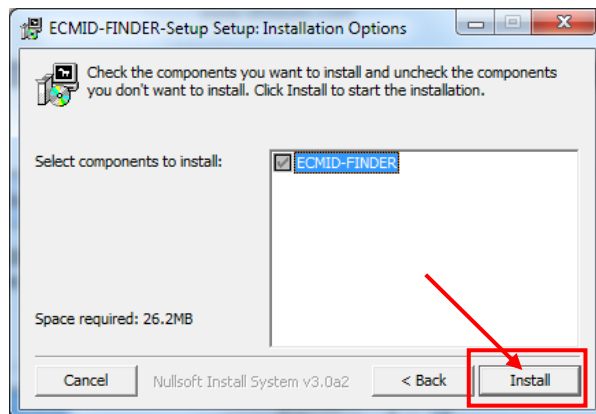
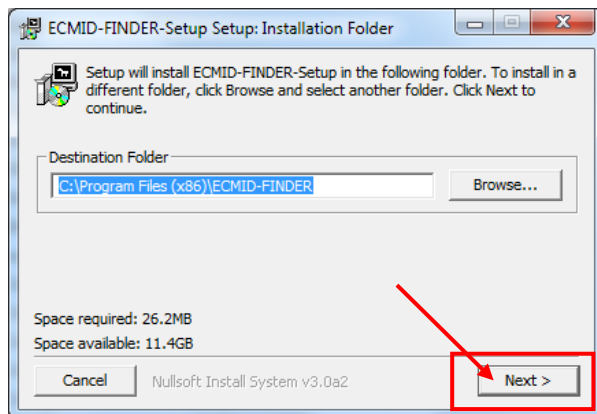
## 1. INSTALLATION INSTRUCTION

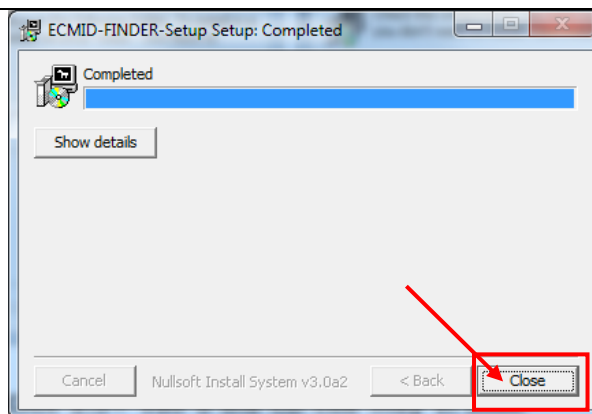
### 1.1. PREPARE

- Download ECMID FINDER installer from below link:  
<https://dtdauto.com/Download/ECMID-FINDER-Setup.zip>
- Extract zip file to your computer (include):
  - + "ECMID FINDER" setup file
  - + "USB to COM" driver setup file

### 1.2. INSTALL ECMID FINDER SOFTWARE

Run "**ECMID-FINDER-Setup.exe**" file from installation folder then do the steps as below:

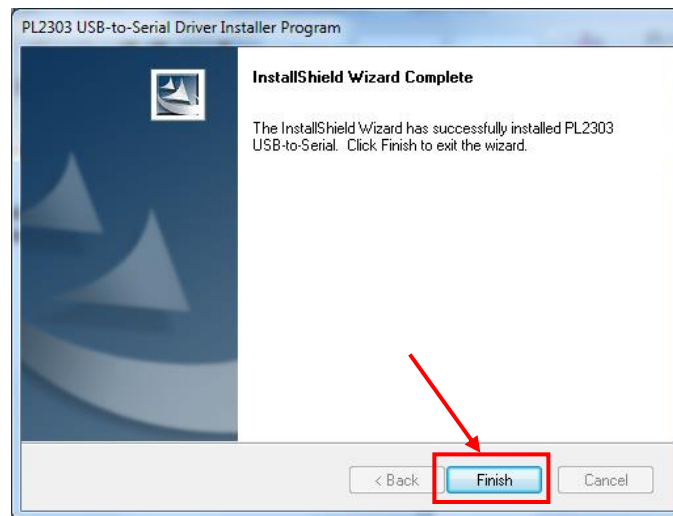
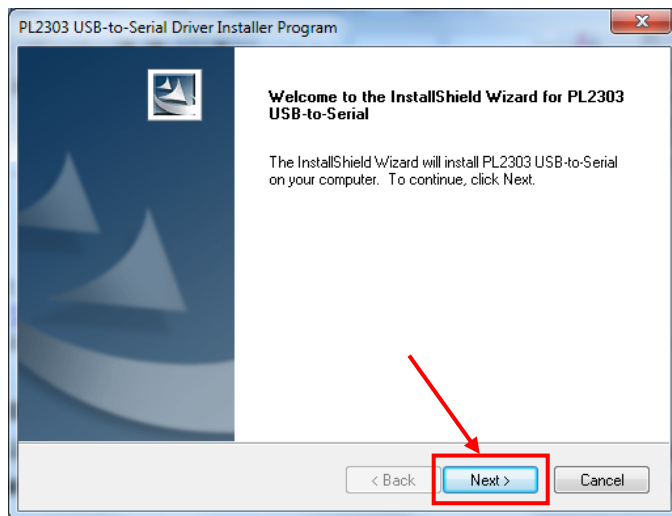




### 1.3. INSTALL USB-COM CONVERTER

- If you use Windows 10 computer then you run "**PL2303-W10RS3RS4-DCHU-DriverSetup.exe**" file in "**PL2303\_Win10**" folder.
- If you use Windows 7 computer then you run "**PL2303-Prolific\_DriverInstaller.exe**" file in "**PL2303\_Win7**" folder.

Please click to **"Next"** button and **"Finish"** button as below:



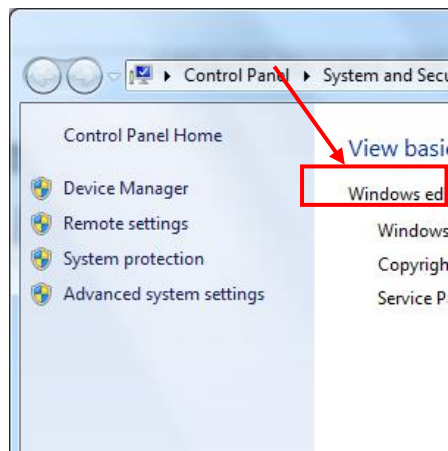
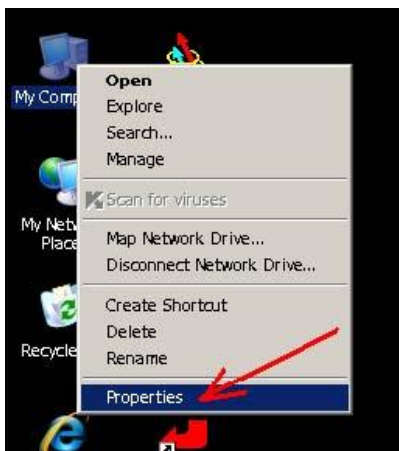
#### 1.4. CONFIGURE COM PORT ON COMPUTER

Plug **"LINK"** cable in ECMID FINDER toolkit into USB port of computer (mark this USB port for next using time)

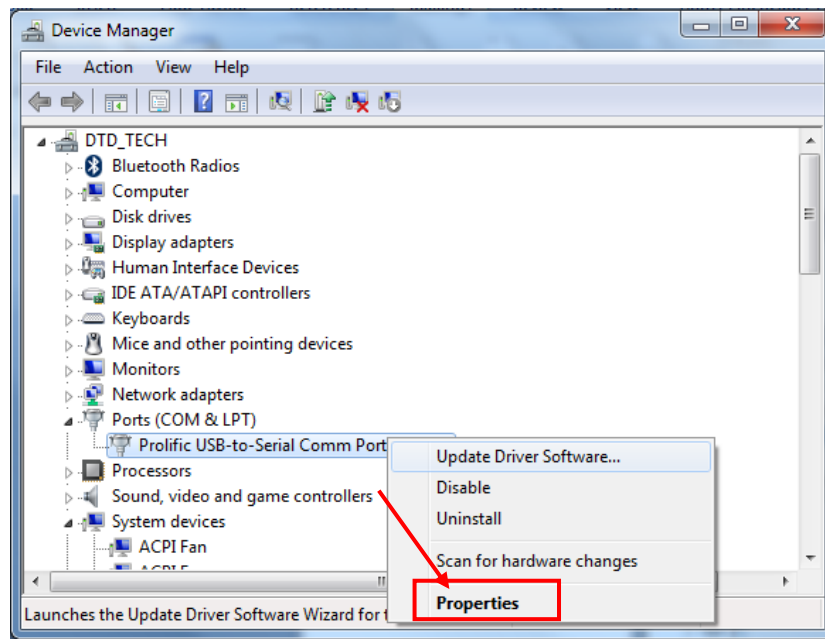


**NOTE: Set COM port configuration on the computer is "PORT NUMBER: 09" as below:**

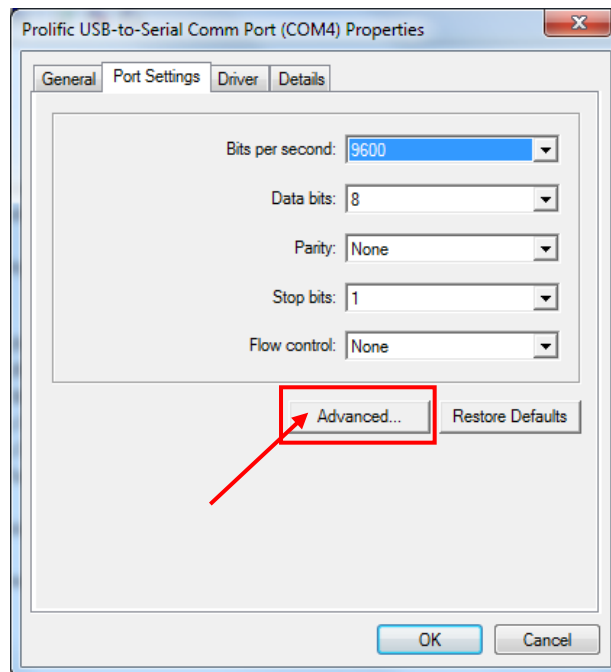
**- Step1:** Click on the right mouse on the **"My Computer"** item on the desktop screen and next click the left mouse in the **"Properties"** menu then click to **"Device Manager"**.



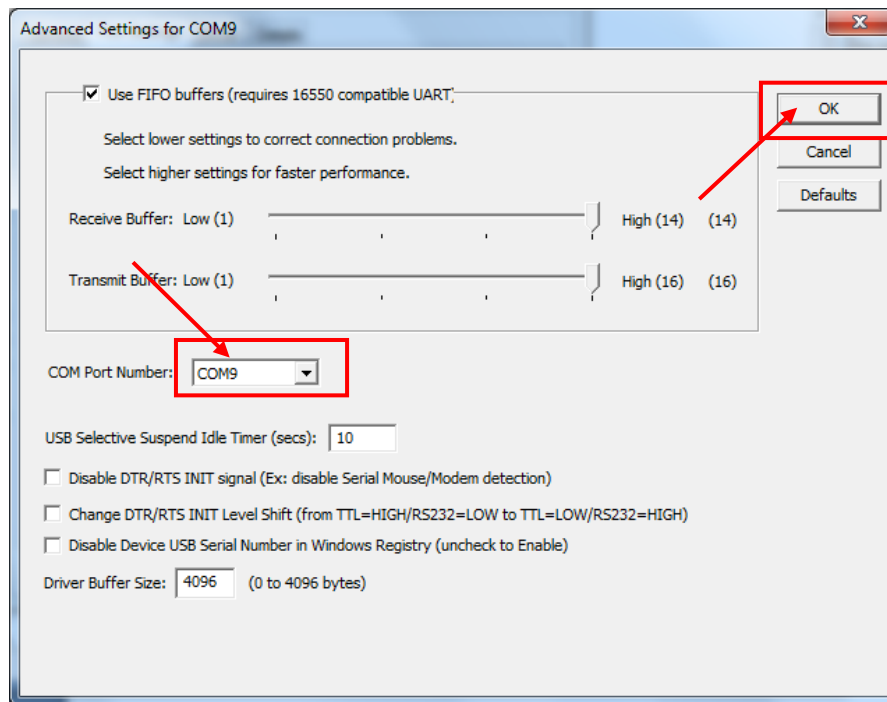
- **Step 2:** Modify COM port number by click right mouse on "**Prolific USB-to-Serial Comport**" item as below:



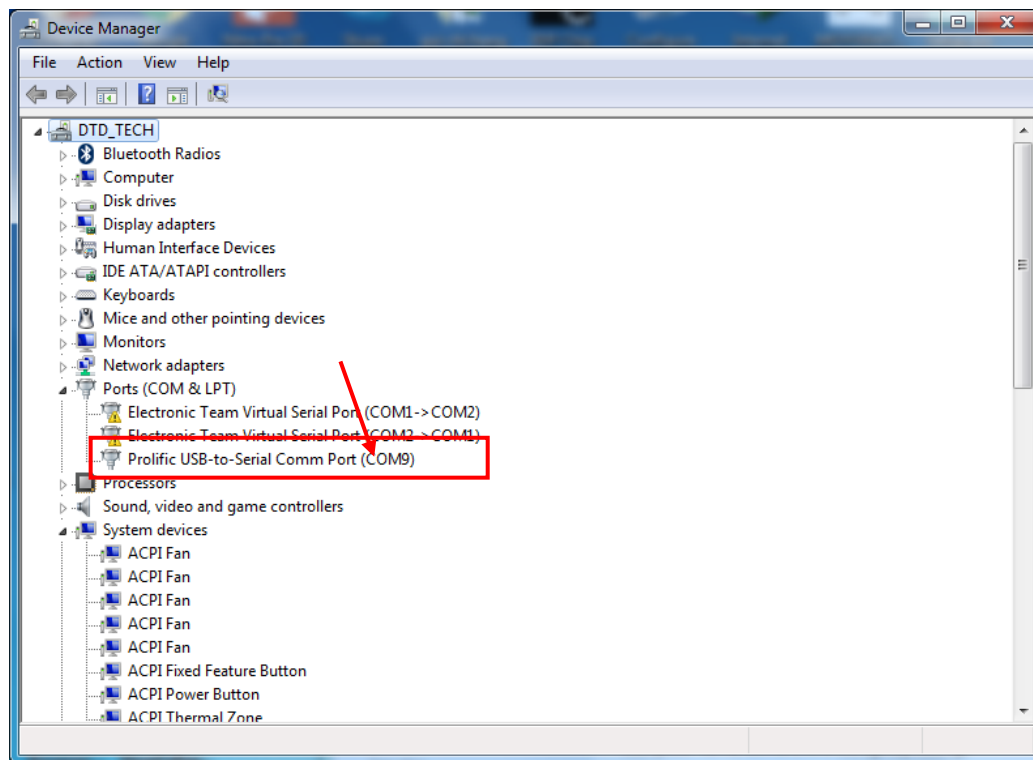
- **Step 3:** Click "**Advanced...**" button



- **Step 4:** Set COM port number is 09 from combo box of COM port number. Click "**OK**" button to finish.



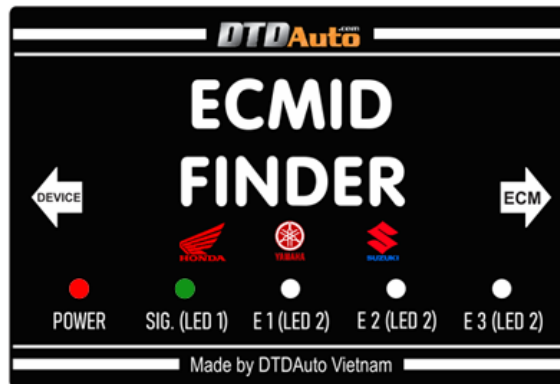
Now, you have completed already COM port setting. To check, you unplug LINK cable and re-plug, you will see to appear visual COM port is 09 numbers.





## 2. WORKING STATUS INFORMATION OF ECMID FINDER

While ECMID FINDER toolkit is working, working status will be indicated by LED lights and beep sound.



WORKING STATUS OF ECMID FINDER	POWER	SIG.(LED 1)	LED 2	BEEP SOUND
NOT WORKING	OFF	OFF	OFF	OFF
WORKING	ON	Quick flash	ON	OFF
CONNECTION IS ERROR	ON	OFF	OFF	Long beep
FOUND ECMID	ON	OFF	Slow flash	Long beep

**Note:** - E1 is ECM No.1, E2 is ECM No.2, E3 is ECM No.3

- When a connection error occurs, you must check the loosen connector or wrong connection

### 3. FUNCTIONS OF ECMID FINDER

#### 3.1 FIND ECMID FROM ECM

Open ECMID FINDER software. If you find ECMID of two ECMs then you do as below:

- **Step 1:** Select "**FIND ECMID FROM ECM**" function, select quantity of ECM (example: 2 ECMs) and model or ECM code of two ECMs then click on "**NEXT**" button



- **Step 2:** Connect ECMID FINDER toolkit with ECM. You click on **"CONNECTION GUIDE"** button to view connection diagram then click on **"NEXT"** button

**DTD**Auto.com  
**ECMID FINDER**  
Version: 1.0  
Update: 19/10/2021

**ENTER INFORMATION**

**HONDA**

**SELECT MANUFACTURER**  
HONDA

**SELECT FUNCTION**  
☒ FIND ECMID FROM ECM  
☐ READ ECMID FROM ECMID FINDER AND CHECK OPERATION

**SELECT QUANTITY OF ECMs**  
☐ 1 ECM ☒ 2 ECMs ☐ 3 ECMs

**SELECT VEHICLE OF ECM 1**  
K66G-V61 V01 (AIR BLADE 2018)

**SELECT VEHICLE OF ECM 2**  
K66G-V61 V01 (AIR BLADE 2020)

**SELECT VEHICLE OF ECM 3**  
[Empty dropdown]

**VIEW GUIDE VIDEO**

**Diagram:** ECM CABLE connected to ECM 01, ECM 02, ECM 03, and Don't use.

**REQUIRE:**  
 - Connect ECM cable to ECM as above instruction  
 - Click to 'CONNECTION GUIDE' to view connection diagram between ECMID FINDER and ECM

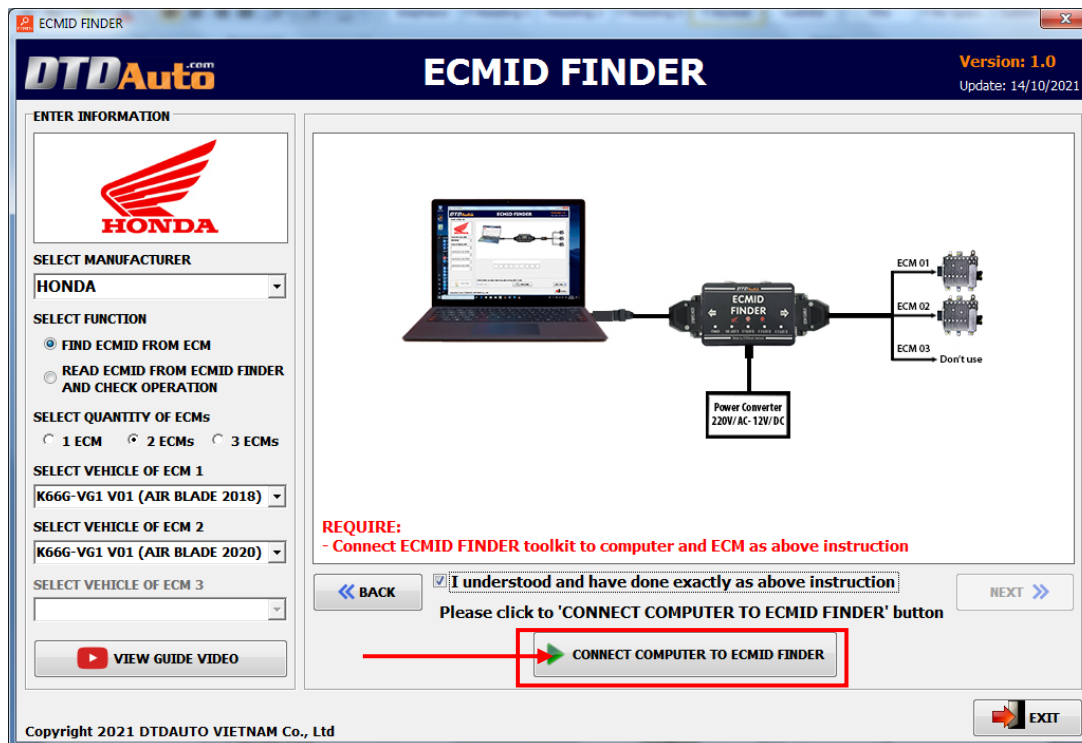
☒ I understood and have done exactly as above instruction

Please click to 'NEXT' button to continue

**BACK** **NEXT** **EXIT**

Copyright 2021 DTD AUTO VIETNAM Co., Ltd

- **Step 3:** Click on “**CONNECT COMPUTER TO ECMID FINDER**” button to connect ECMID toolkit with computer and ECM



- **Step 4:** If you can remember one or a few numbers of plastic-card then you enter them in textbox. If you do not remember then you ignore and click on **"FIND ECMID FROM ECM"**.

**ECMID FINDER** Version: 1.0 Update: 19/10/2021

**ENTER INFORMATION**

**HONDA**

**SELECT MANUFACTURER**

HONDA

**SELECT FUNCTION**

☒ FIND ECMID FROM ECM

☐ READ ECMID FROM ECMID FINDER AND CHECK OPERATION

**SELECT QUANTITY OF ECMs**

☒ 1 ECM ☐ 2 ECMs ☐ 3 ECMs

**SELECT VEHICLE OF ECM 1**

K66G-VG1 V01 (AIR BLADE 2018)

**SELECT VEHICLE OF ECM 2**

K66G-VG1 V01 (AIR BLADE 2020)

**SELECT VEHICLE OF ECM 3**

**VIEW GUIDE VIDEO**

**FOR FASTER FINDING, YOU CAN ENTER PART OF ECMID NUMBERS IF YOU ARE SURE MEMORY. IF YOU CAN'T REMEMBER, YOU CAN BYPASS THIS REQUEST**

- Enter one or a few numbers that you remember on the plastic card marked with "\*" of the key (FOB) that must have been used in the past for a motorcycle with this ECM

- Need to enter the exact number and location of the memory number on the plastic card (the more numbers you remember, the faster the ability to find)

Enter ECMID number here!

? ? ? ? ? ? ? ? ? ?

**Please click to 'FIND ECMID FROM ECM' button to find ECMID**

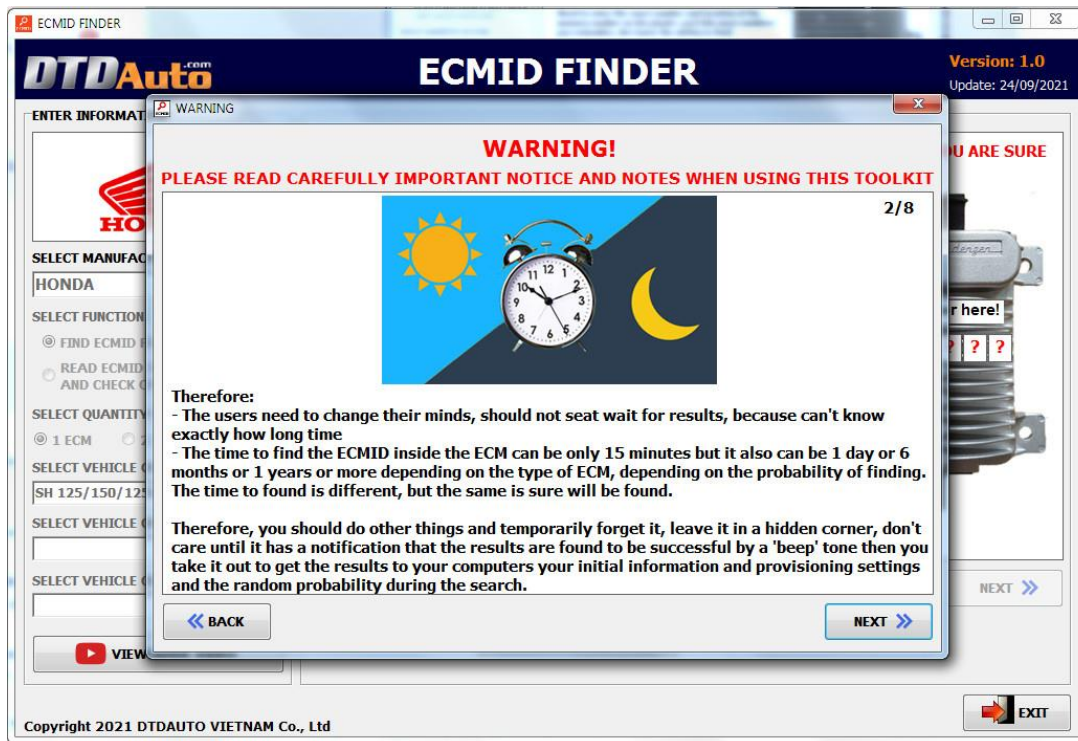
**FIND ECMID FROM ECM**

**STOP FINDING ECMID**

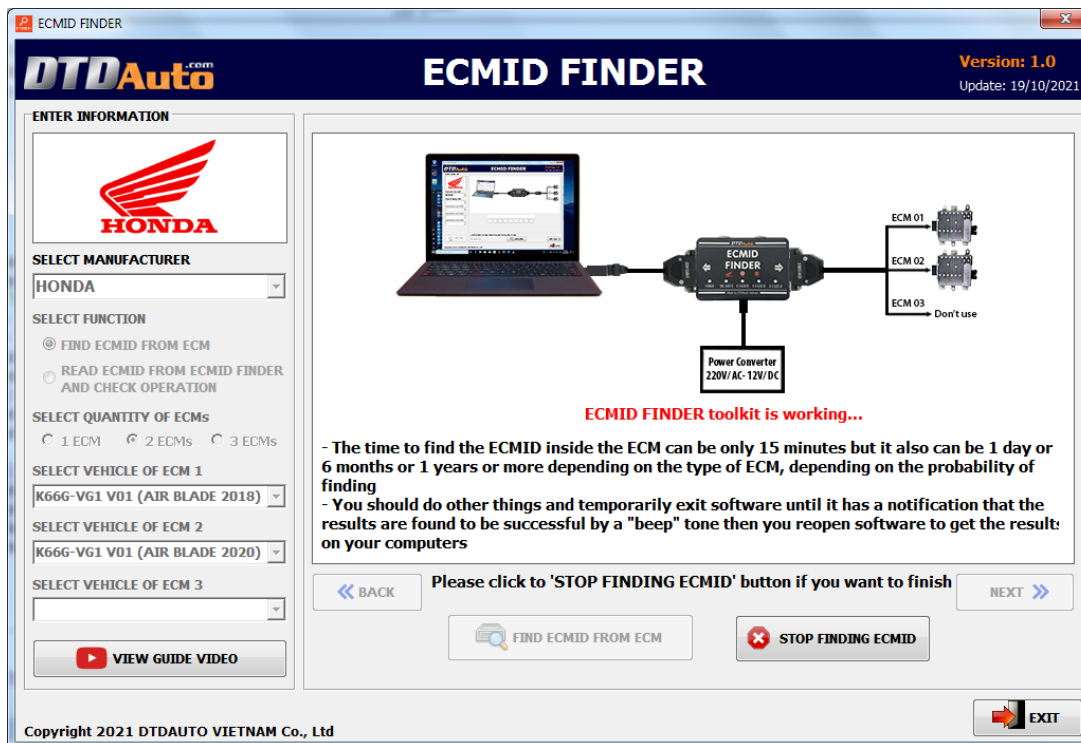
**EXIT**

Copyright 2021 DTD AUTO VIETNAM Co., Ltd

**Note, Step by step to read all the screen display information to understand when you use this toolkit. Please read all warnings carefully.**



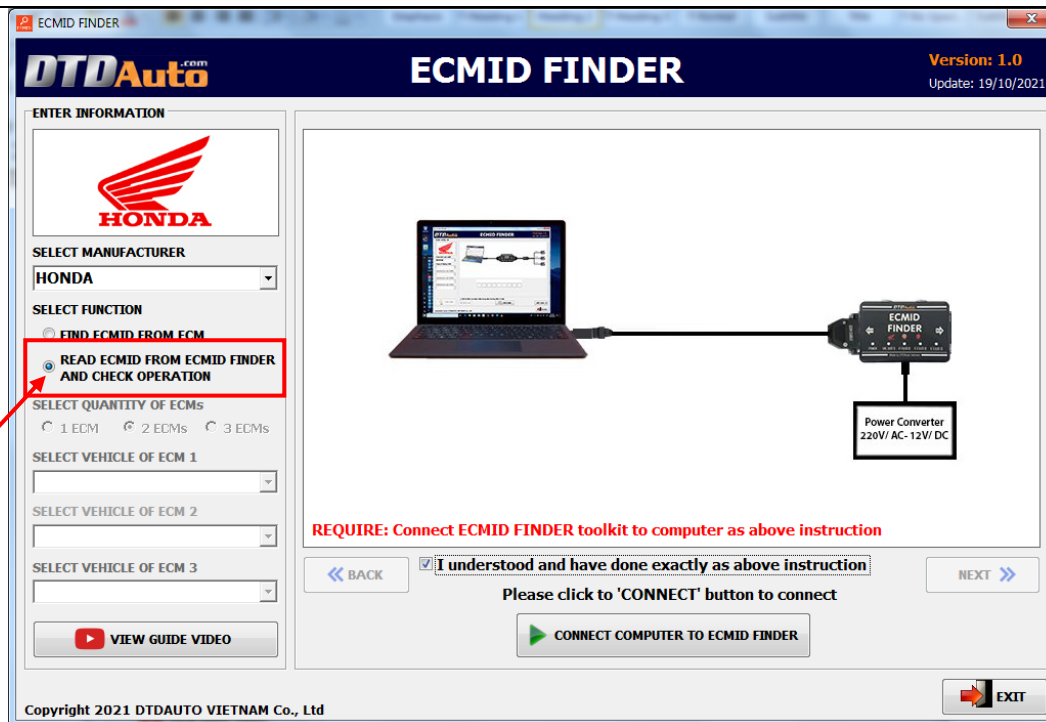
When toolkit is working, the screen display as below:



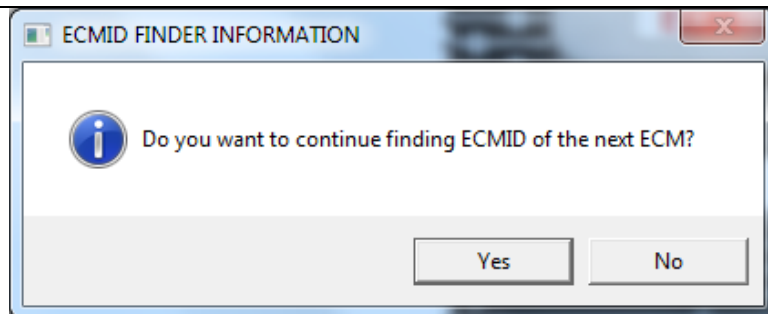
If you want to stop finding ECMID then you click on **"STOP FINDING ECMID"** button.

- **Step 5:** You should do other things and temporarily exit software until it has notification that the results is found to be successful by “beep” sound.
- **Step 6: When ECMID toolkit found ECMID (you can hear long continuous beep sound and see LED 2 flash slowly) then you connect toolkit back to computer.** You select “**READ ECMID FROM ECMID FINDER AND CHECK OPERATION**” option then click on “**CONNECT COMPUTER TO ECMID FINDER**” button






Note: In case you find the ECMID of many ECMs, the screen displays as below image. You click **"Yes"** if you want to continue finding ECMID of the next ECM. You click **"No"** button if you want to stop finding ECMID.




- **Step 7:** The screen display ECMID information of ECM as below:



**ECMID FINDER**

**Version: 1.0**  
Update: 12/10/2021

ENTER INFORMATION



SELECT MANUFACTURER  
HONDA


SELECT FUNCTION  
☒ FIND ECMID FROM ECM  
☐ READ ECMID FROM ECMID FINDER AND CHECK OPERATION

SELECT QUANTITY OF ECMs  
☒ 1 ECM   ☐ 2 ECMs   ☐ 3 ECMs


SELECT VEHICLE OF ECM 1  
K97A-V22 V01 (PCX Hybrid 2019-)

SELECT VEHICLE OF ECM 2

SELECT VEHICLE OF ECM 3

 VIEW GUIDE VIDEO

CONGRATULATION!  
You have found ECMID successfully!  
(You may unplug power cable out of ECMID FINDER toolkit then reconnect it)



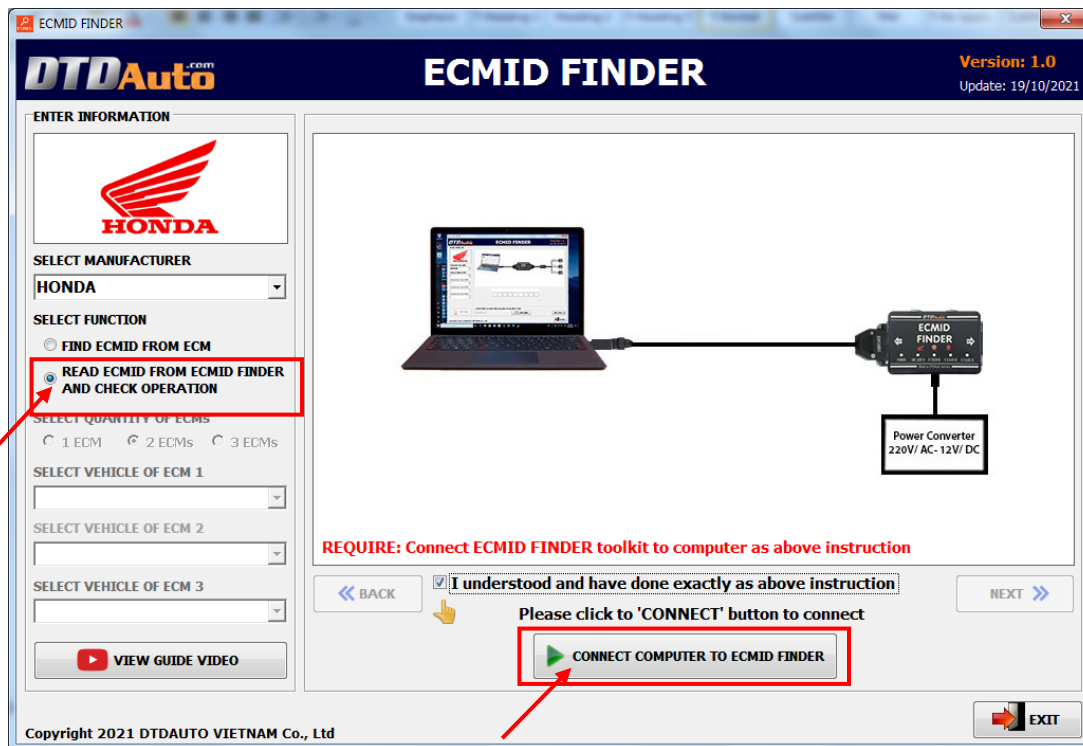
☒ I understood and have done exactly as above instruction

Copyright 2021 DTD AUTO VIETNAM Co., Ltd

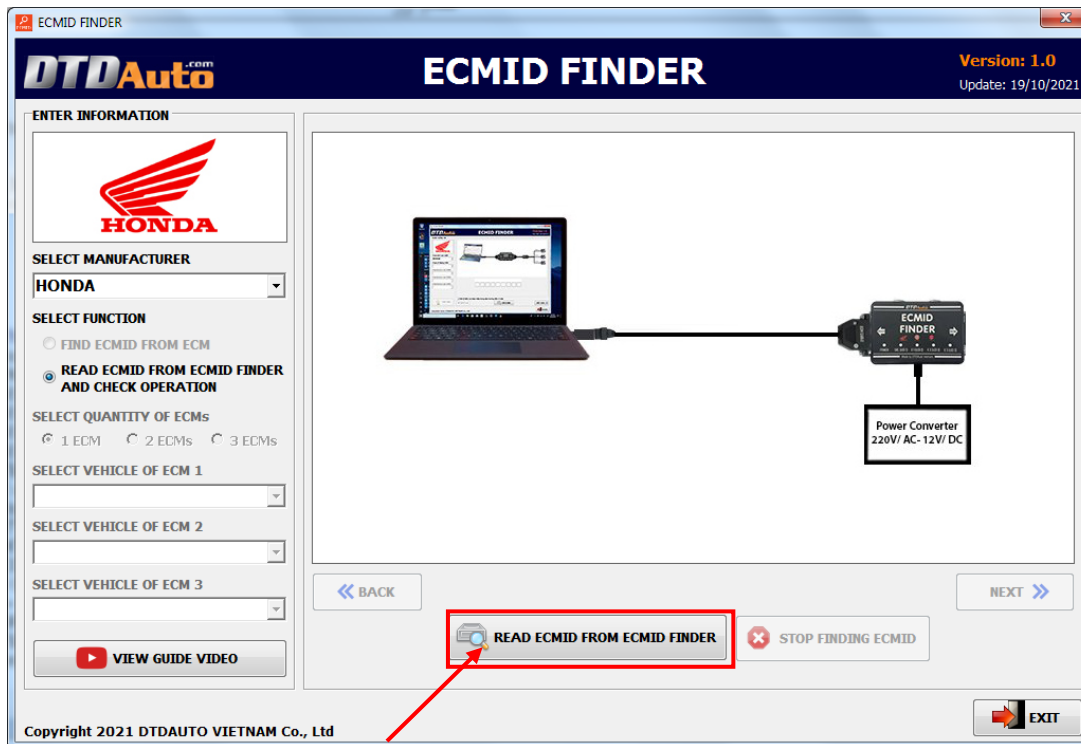
### 3.2 READ ECMID FROM ECMID FINDER

Used to read ECMID in memory of ECMID FINDER toolkit of previous readings.


- **Step 1:** You select "**READ ECMID FROM ECMID FINDER AND CHECK OPERATION**" function then connect toolkit to computer and click on "**CONNECT COMPUTER TO ECMID FINDER**" button



- **Step 2:** You click on “**READ ECMID FROM ECMID FINDER**” button




The screen display ECMID information of previous readings. You can try one of ECMID on list here to use. Note: The ECMID at the top stores the last reading



**ECMID FINDER**

Version: 1.0  
Update: 12/10/2021

ENTER INFORMATION



SELECT MANUFACTURER  
HONDA


SELECT FUNCTION  
☐ FIND ECMID FROM ECM  
☒ READ ECMID FROM ECMID FINDER AND CHECK OPERATION

SELECT QUANTITY OF ECMs  
☒ 1 ECM ☐ 2 ECMs ☐ 3 ECMs

SELECT VEHICLE OF ECM 1

SELECT VEHICLE OF ECM 2

SELECT VEHICLE OF ECM 3

 VIEW GUIDE VIDEO

CONGRATULATION!

You have read ECMID successfully!  
(You can try one of ECMIDs to use)

ECMID: 116892184


ECMID: 012455134


ECMID: 129021236

ECMID: 263458965


ECMID: 124489655

<< BACK

 READ ECMID FROM ECMID FINDER

 STOP FINDING ECMID

NEXT >>

 EXIT

Copyright 2021 DTD AUTO VIETNAM Co., Ltd

DTD AUTO VIETNAM Co., Ltd – www.dtdauto.com – EDITED 19/10/2021

22

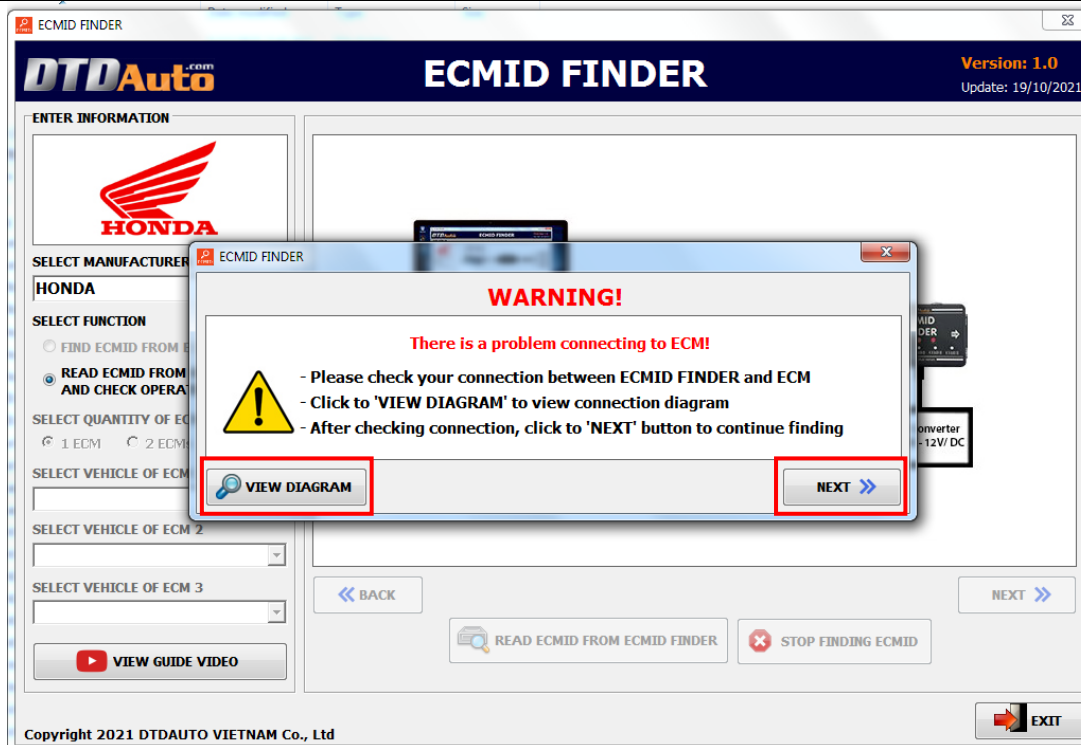
---

### **3.3 CHECK WORKING STATUS AND OPERATION GUIDE WHEN THE CONNECTION IS NOT SUCCESSFUL**

When ECMID FINDER is working, you can observe the status of LEDs and sound emitted from the toolkit or connect the ECMID FINDER toolkit to the computer to know its working status.

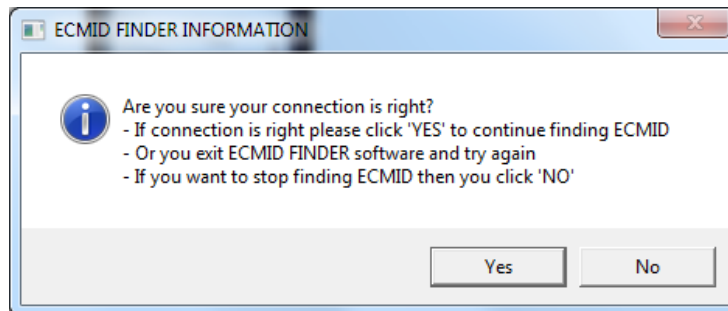
When the toolkit detects a connection is error condition between the ECMID FINDER toolkit and the ECM then the toolkit emits a continuous Beep sound, POWER light stays ON, all other lights are OFF.

You select "**READ ECMID FROM ECMID FINDER AND CHECK OPERATION**" function then connect ECMID FINDER toolkit with computer. You check your connection. Please click on the "**VIEW DIAGRAM**" button to review the connection instruction. After sure the connection is correct and the connectors are firmly, click on "**NEXT**" button.





The screen display report as below:



If your connection is right and you want to continue finding then you click on **"Yes"** button.

If you stop finding ECMID then you click **"No"** button.

**Note: If you continue to hear a continuous Beep sound, POWER light stays ON and all other lights are OFF then your connection is not correct. Please exit the software and try again.**

***Wish you success with this ECMID FINDER product!***

# INDEX

<b>1. INSTALLATION INSTRUCTION .....</b>	<b>1</b>
1.1 PREPARE .....	1
1.2 INSTALL ECMID FINDER SOFTWARE .....	2
1.3 INSTALL USB-COM CONVERTER .....	3
1.4 INSTALL COM PORT ON COMPUTER .....	1
<b>2. WORKING STATUS INFORMATION OF ECMID FINDER.....</b>	<b>9</b>
<b>3. FUNCTION.....</b>	<b>10</b>
3.1 FIND ECMID FROM ECM.....	10
3.2 READ ECMID FROM ECMID FINDER.....	20
3.3 CHECK WORKING STATUS AND OPERATION GUIDE WHEN HAVE CONNECTION FAULT .....	23

---

**DTDAUTO VIETNAM Co., Ltd**

**Phone:** (+84)43.7845426, (+84)913001792

**Address 1:** No. D1, 93 Alley, Cau Giay st., Hanoi, Viet Nam

**Address 2:** Floor 3, Building A25, Institute of Physics / Institute of Science and Technology of Vietnam, No. 18 Hoang Quoc Viet, Hanoi, Vietnam

**Email:** [dtddauto@gmail.com](mailto:dtddauto@gmail.com)

**Website:** <http://www.dtdauto.com>; <http://www.cartools.com.vn>;  
<http://www.cartraining.com.vn>